



Onward & Upward: Together We Rise

SEPTEMBER 25, 2025
WOODBERRY KITCHEN
5:30 PM - 8:30 PM

2025 SPONSORSHIP PACKAGE

“Together, We Build a Better Future”



INTRODUCTION

The Family Crisis Center of Baltimore County, Inc. (FCC) was founded over four decades ago by a group of visionary individuals who recognized a pervasive and urgent issue, relationship violence. Since its founding, FCC has been steadfast in its mission to interrupt and prevent cycles of violence by engaging the entire family system, working in partnership with the community, and addressing the root causes of harm.

FCC takes a holistic, trauma-informed approach to healing. We empower survivors to make informed decisions that support their safety, autonomy, and long-term well-being. We work with individuals who have used violence to help them identify, understand, and change the behaviors and belief systems that perpetuate harm. We also support children affected by violence, helping them navigate trauma and build resilience in safe, nurturing environments.

As advocates, case managers, and community allies, FCC walks alongside the families we serve providing support, restoring hope, and reinforcing the belief that healing is possible. Our work is grounded in the conviction that no one should face violence alone, and that meaningful change happens when we rise together as a community.





VISION & MISSION



MISSION

Working with individuals, families and communities to interrupt and prevent cycles of violence in relationships.

VALUES

- Intentional 
- Motivated 
- Collaborative 
- Innovative 



VISION

Every home is safe, families are thriving and communities are strong.



IMPACT

MEALS SERVED



44,844

NIGHTS OF SLEEP PROVIDED



11,752

HOTLINE CALLS ANSWERED



3,874

OF PEOPLE SERVED



8,717

BENEFITS FOR SPONSORS



Sponsoring Onward & Upward, the Family Crisis Center of Baltimore County's signature fundraising event, is more than a marketing opportunity it's a powerful statement of solidarity with survivors of domestic violence and families in crisis. Your support directly fuels emergency shelter, counseling, legal advocacy, and trauma-informed care for hundreds of individuals each year. As a sponsor, you'll align your brand with meaningful social impact, demonstrate community leadership, and reach a compassionate, engaged audience dedicated to uplifting others.

Why Sponsor "Onward & Upward: Together We Rise"



High-Visibility Recognition: Your business or organization will be showcased in front of 125+ guests, community leaders, and local media through event materials, social media, and our website.



Brand Alignment with Social Impact: Show your customers and stakeholders that your values include community safety, equity, and healing.



Direct Support for Critical Services: Every sponsorship dollar helps provide safe shelter, support services, and a path to healing for families in Baltimore County.





SPONSORSHIP PACKAGES



1. EMPOWERMENT PARTNER

Contribution: \$10,000

Benefits:

- Exclusive title sponsorship
- Prominent logo placement on all promotional materials
- Chance to speak at the event
- Recognition on name badge at the event
- Logo featured on FCC website for one year
- Posts on social media acknowledging support
- Table to promote organization at event
- Logo signage at event
- Full page ad in program
- Giveaway provided to guests (sponsor to provide)
- 8 tickets



SPONSORSHIP PACKAGES

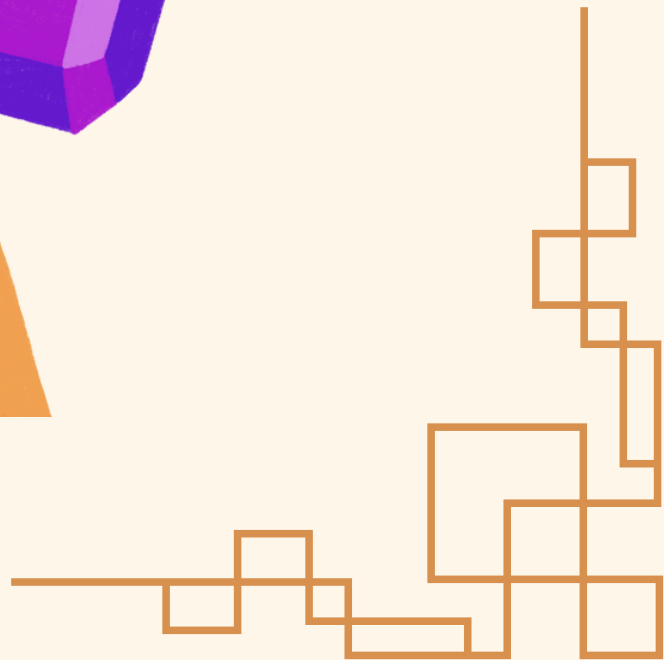


2. STRENGTH SPONSOR

Contribution: \$5,000

Benefits:

- Logo placement on promotional materials
- Acknowledgment during opening and closing ceremonies.
- Logo featured on FCC website for one year
- Recognition on name badge at the event
- Posts on social media acknowledging support
- Logo signage at event
- Half page ad in program
- 6 tickets





SPONSORSHIP PACKAGES

3. HOPE SPONSOR

Contribution: \$2,500

Benefits:

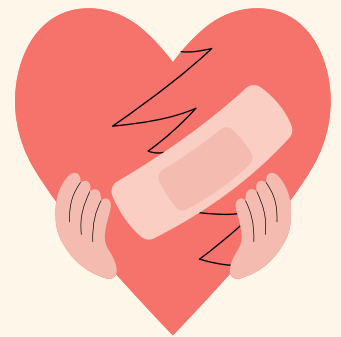
- Logo displayed on event materials
- Logo included on the event website and sponsor appreciation board
- Quarter-page ad in the event program booklet
- Post on social media acknowledging support
- Recognition on name badge
- 4 tickets

4. HEALING FRIEND

Contribution: \$1,000

Benefits:

- Logo included on the event website and sponsor appreciation board
- Recognition on name badge
- 2 tickets .



5. SUPPORTER

Contribution: \$500

Benefits:

- Logo included on the event website and sponsor appreciation board
- Recognition on name badge
- 1 ticket

THANK YOU!

We extend our deepest thanks for your consideration and support of the Family Crisis Center of Baltimore County, Inc. Your partnership plays a vital role in our mission to create safe, healthy, and thriving families. Together, we can break the cycle of violence and build a stronger, more compassionate community. Thank you for standing with us and the families we serve.

For more information, contact Brady Sensibaugh:



410-285-4357



Brady@familycrisiscenter.net



www.familycrisiscenter.net